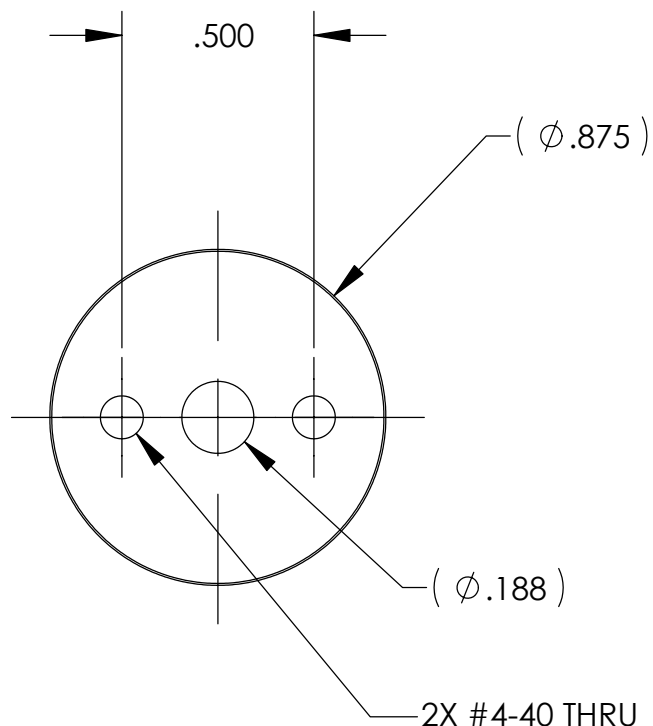


REVISIONS		
REV	DESCRIPTION	DATE
B	Changed to 3/16"	4/8/2004



- NOTES:
1. TAPPED HOLES TO BE 90 DEGREES FROM SPLIT.
 2. CLOCKING IS NOT CRITICAL.
 3. $.500$ DIMENSION APPLIES WHEN COLLAR IS CLAMPED TO A 3/16" PIN.
 4. TAPPED HOLES TO BE IN LINE WITH BORE.
 5. MAKE FROM BERG # CG-14-A.

UNLESS OTHERWISE SPECIFIED:		<div>High Precision Devices</div> <div>1668 Valtec Lane, Suite C, Boulder, Colorado 80301 Phone: (303) 447-2558 Fax: (303) 447-2548 Web Site: www.hpd-online.com</div>			
DIMENSIONS ARE IN INCHES DECIMAL TOLERANCES: .X ±.030 .XX ±.015 .XXX ±.005					
ANGULAR TOL: ± 1° SURFACE ROUGHNESS:√63		TITLE: p02101-328 shaft collar			
INTERNAL AND EXTERNAL SURFACE INTERSECTIONS SHALL BE UNIFORMLY FINISHED WITH CHAMFER .005/.010 X 45° OR RADIUS .005/.010. CHAMFER ALL THREADED HOLES 110° OF MAJOR DIAMETER X 45°		CONFIGURATION: 00-Default			
MATERIAL: -	SIZE A	QTY PER ASSM: 3	SCALE: 2:1	SHEET 1 OF 1	REV B
FINISH: NONE		DATE: 6/2/2004	DRAWN BY: C. Danaher		